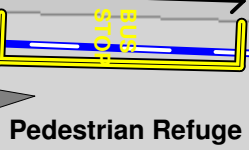





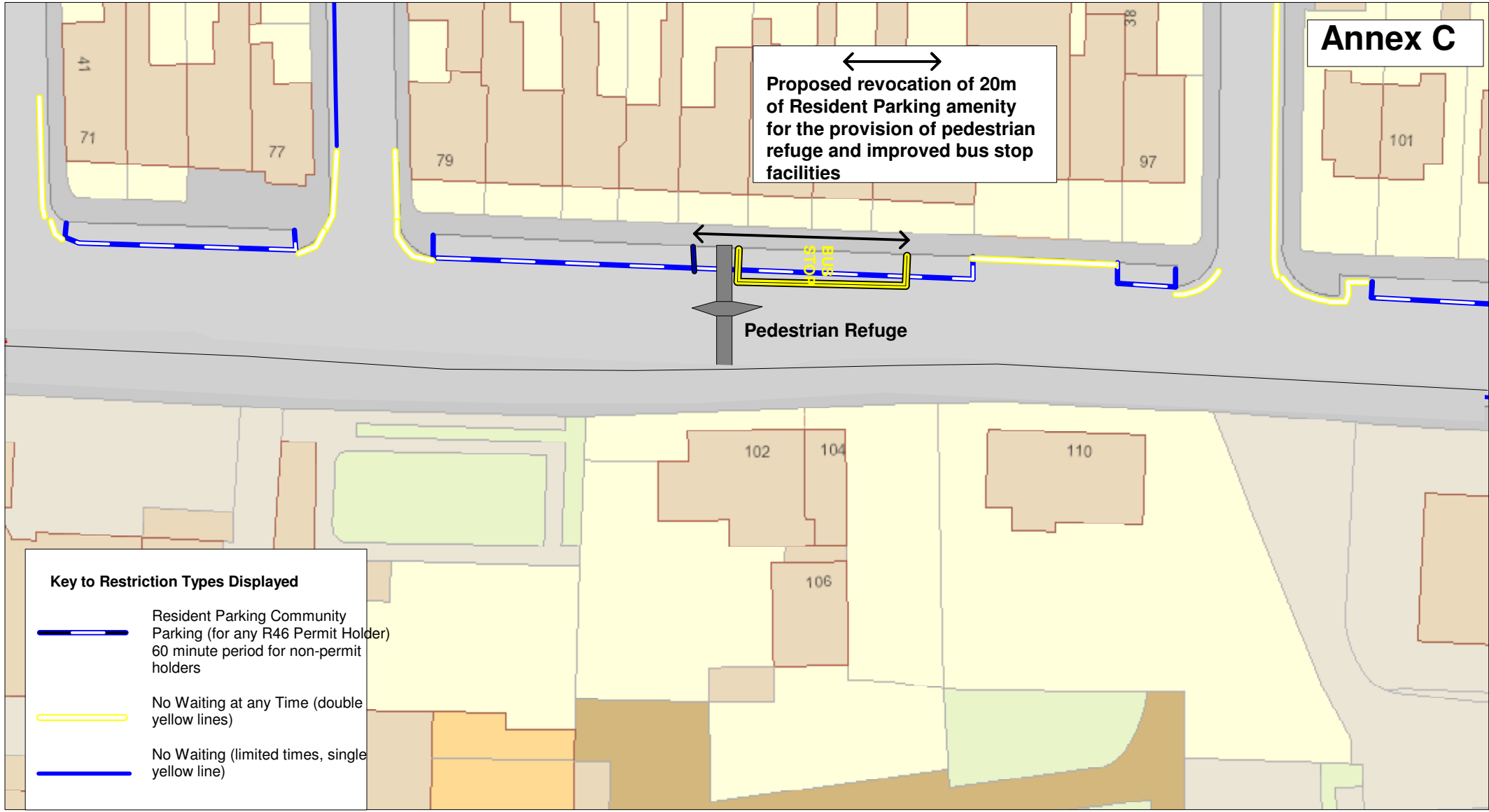
# Annex C

Proposed revocation of 20m of Resident Parking amenity for the provision of pedestrian refuge and improved bus stop facilities



**Key to Restriction Types Displayed**

-  Resident Parking Community Parking (for any R46 Permit Holder) 60 minute period for non-permit holders
-  No Waiting at any Time (double yellow lines)
-  No Waiting (limited times, single yellow line)



+ Crown copyright. All rights reserved  
Licence No. 2003

Annex C, Lawrence Street (North Side)  
Proposed Amendment to Traffic Regulation Order  
to facilitate highway changes

SCALE	1 : 500
DATE	13/11/2015
DRAWING No.	
DRAWN BY	